

# BlueFire™ IX5010

## Multi-Service IP Switch Router

The NEC BlueFire IX5010 IP Switch Router offers numerous technological advances in reliability, capacity and service management for multi-service networks. The BlueFire IX5010 also accommodates a broad range of high-speed interfaces for integrating and transporting voice, video and data across an enterprise network.



BlueFire IX5010

### Flexible Service Delivery

The NEC BlueFire IX5010 employs hardware-based routing and Quality of Service (QoS) engineering. Interconnectivity options include ATM, Frame Relay, Ethernet Network, Frame Forwarding, Circuit Emulation (CES) and other interfaces. Unlike most competitive

devices, the BlueFire IX5010 implements the technology with state-of-the-art NEC ASICs, allowing them to process IP packets at near-wire speed, practically eliminating device latency.

### Fully Interoperable

The NEC BlueFire IX5010, with its wide array of interfaces and services, is fully interoperable with most major routing devices.

### IPv6 Enabled

The BlueFire IX5010 supports future enhancements and migration in the IP network by implementing Internet Protocol Versions 4 and 6 (IPv4 & IPv6) in silicon. By fully conforming to the IETF standard Internet Protocol Version 4 (IPv4) and supporting IPv6, a BlueFire network can migrate to IPv6 at any time without having to endure a hardware forklift.

It also offers enhanced QoS features made possible by the extended address space of IPv6 so that voice and video can be safely integrated with data traffic without jeopardizing the integrity of the packets.

### Enhanced Quality of Service

The BlueFire IX5010 supports IPv4 QoS mechanisms including DiffServ, RSVP and Weighted Fair Queuing, to maximize packet throughput and network efficiency.

### Interfaces to Support MultiService

The BlueFire IX5010's 4Gbps chassis supports a broad array of networking interfaces to facilitate LAN/WAN integration and flexible configuration.

### NEC's Enterprise Open Network (NEON)

NEON embodies NEC's philosophy that drives development of complementary communication solutions for OPEN networks, delivering value-added capabilities and quality of service, while protecting investments; all without compromis-

# BlueFire IX5010

## Multi-service IP Switch Router

### Features

#### BLUEFIRE IX5010

- Sophisticated QoS: Intserv/RSVP, DiffServ, 802.1p/Q Fair Queuing, ATM & FR QoS
- Advanced IP router: Hardware IP (L3/L4) routing, VLAN tag, MAC switching for ATM, IPoA, LANE, MPoA, PPP over SONET
- Varied WAN&LAN I/F: POS (155M), ATM (UNI/NNI), FR (leased line, serial), 10/100 BASE-TX and 1000BASE-X Ethernet, Circuit Emulation, Frame Forward
- Easy maintenance & operation: Configuration through local and remote console. Easy access to front craft port, RMON, SNMP, FTP, Telnet, CLI, and backup flash card
- Ethernet port trunking function for greater capacity Ethernet services
- ASIC based routing for greater packet forwarding and routing decision performance
- Redundant hot swappable AC or DC Power Supply available

### Interfaces Supported

Interface Type	Data Rate	Connector	Lines/card
10/100 BASE-T	10/100 Mbps	RJ45	8
1000 Base-X	1000 Mbps	SC	1
POS	155 Mbps	SC	2
CES	1.5 Mbps	RJ45	4
FF/FR	1.5 Mbps	RJ45	4
ATM	155 Mbps	SC	1
	45 Mbps	Coax	2
	1.5 & 25 Mbps	RJ45	4

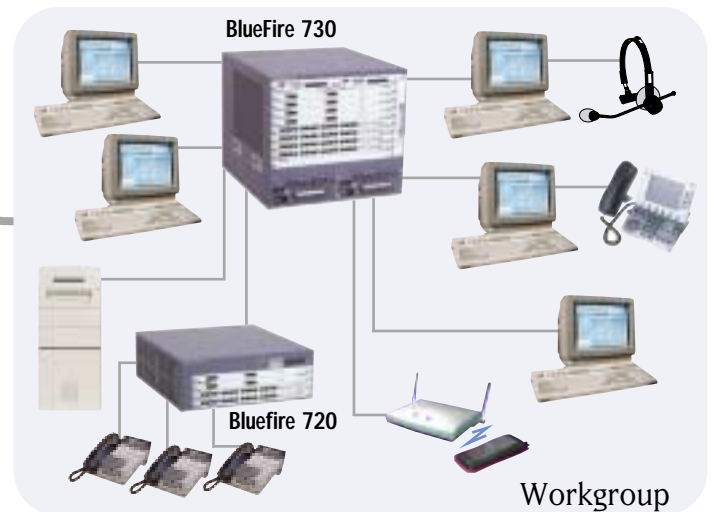
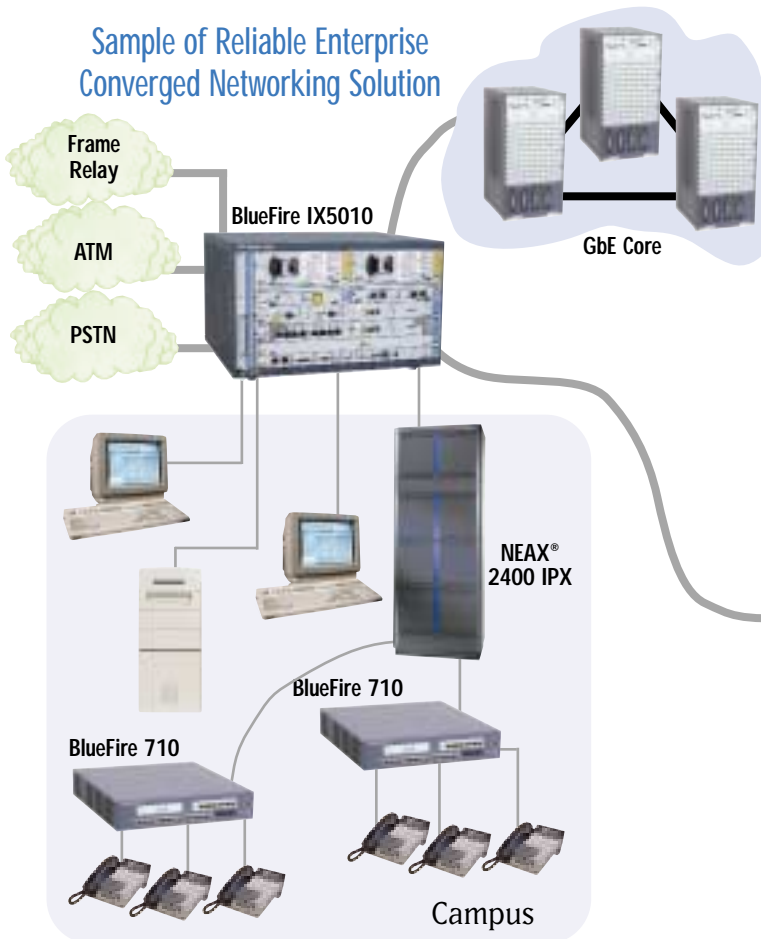
### System Parameters

Switch Capacity	4 Gbps IP and .9 Gbps ATM
Switch Performance	Up to 680 Kpps
Network Management	SNMP, Telenet and direct RS232, RMON
Supported Protocols	IPv6, IPv4, RIP, RIP2, OSPF2, BGP4, BGP4+, IntServ / RSVP, DiffServ

### Power and Environmental

AC Power	100-240 VAC, 3.5A @ 120 VAC
DC Power	-48VDC, 7A @ -48VDC
Temperature	5-40° C with 10-80% humidity

### Sample of Reliable Enterprise Converged Networking Solution



©NEC America, Inc. 10/01  
BlueFire is a trademark of NEC America.  
NEAX & Dterm are registered trademarks of NEC Corporation.



188257

To find out more about the BlueFire IX5010 or to inquire about NEC's powerful and versatile data products, visit our website at [www.cng.nec.com](http://www.cng.nec.com)

Powered by Innovation